



Harness the Power of the Sun

SILENT MESSENGER DYNAMIC MESSAGE SIGN



* Shown in lowered
"towing" position

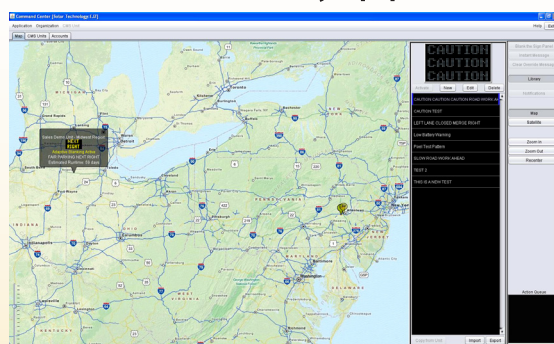
Powerful Control Technology
included with each unit:



- Intuitive, 10.4" LCD touch-screen GUI.
- So easy to operate that no instructions are needed!
- Multi-lingual capability allowing use throughout the world.
- Message scheduler for date/time and event-based messages.
- NTCIP compatibility for fast, simple integration into standard ITS installations.
- Integrated GPS receiver.
- USB "thumb drive" interface for fast, easy software updates (via the SolarTech website), as well as data collection (with optional Radar).

Remote Control and Diagnostics (with Modem Option)

COMMAND CENTER Manage, Monitor and Segment your Fleet of Traffic Safety Equipment



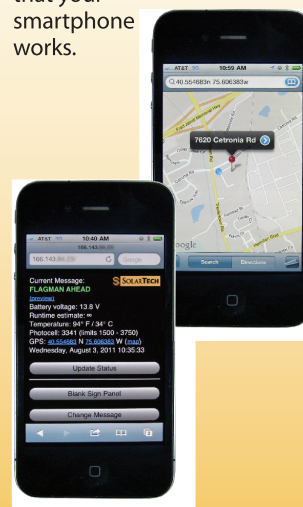
- GPS mapping of all units
- Group control and management of fleet
- Limit Liability - permanent log records what messages are displayed, and when
- Automatic notifications and alerts



- Be notified of message change, location change, low battery, etc.
- Improve worker and driver safety
- Make fewer trips to the site by using remote diagnostics
- Have less "down time"

SMARTPHONE CONTROL

- Full control of your message board from your smartphone.
- No software or apps required.
- Totally secure - IP Address, user name & password required.
- Messaging - system status, geo-location and diagnostics accessible from anywhere that your smartphone works.



310-SIGN

Have any questions about these products? Speak to an expert at 310-SIGN.

Toll Free North America 1-844-289-7446
 hello@310sign.ca

310SIGN.CA

DISPLAY

Panel Size	126" x 76" (320 cm x 193 cm)
Panel Construction	All aluminum, modular construction
Panel Face	3/16" polycarbonate, non-glare
Matrix Size	27" x 48 pixels (standard)
Pixel Pitch	2.6" x 2.6" (66 mm x 66 mm)
Characters per Line	Up to twelve (12)
Number of Lines	Up to four (4)
Number of Fonts	Twelve (12)
Character Height	13" to 68" (33 cm to 173 cm)
Graphics Capability	Full matrix with full animation
Display Technology	LED (amber, 592 nm)
Display Brightness	>10,000 candela per square meter
Viewing Angle	23° horizontal (minimum)
Display Life Expectancy	10 years typical
Lifting Mechanism	2,000 lb. capacity electro-hydraulic

TRAILER

Length Overall	180" (457 cm)
Width Overall	92" (234 cm)
Width Across Fenders	92" (234 cm)
Height Traveling	103" (262 cm)
Height Operating	162" (412 cm)
Ground Clearance	13" (33 cm) minimum
Weight	2,400 lbs. (1,089 kg) minimum 2,960 lbs. (1,343 kg) maximum
Coupler (Class III)	2" (50 mm) ball or 3" (76 mm) pintle ring
Axle/Suspension	Torq flex - independent

ENERGY SOURCE

Operating Voltage	12 Volts DC (nominal)
Battery Type	6 Volt heavy duty, deep cycle (GC-2)
Number of Batteries	Four (4) standard lead acid (flooded)
Battery Bank Capacity	520 amp hours
Battery Status Indicator	Displays battery voltage, charging activity and low battery condition
Solar Array Construction	Top-mounted solar panels in aluminum frame
Solar Array Power Output	Standard 160 watt (nominal)
Solar Charge Controller	Automatic, temperature compensated
Auxiliary Battery Charger	45 amp, 120 volt AC

MEGA-TECH CONTROL CONSOLE

Console Circuitry	Ultra-low power solid state
Console Touchscreen	Waterproof, backlit, full-color GUI, intuitive icon-driven, multi-lingual
Programming Software	Proprietary, field upgradable
Message Capacity	Pre-programmed and user-programmed greater than 250 each
Time-Date Control	Real-time clock/calendar (365 day)
Message Display Time	User-selectable (0.1 to 99 seconds)
Display Update Time	Instantaneous
Non-Volatile Memory	512 MB compact flash
Password Protection	User-selectable, multi-level
Operator Interface	Easy-to-use icons (no manual required)
Connectivity	Networkable (wired or wireless) and NTCIP compatible (ethernet and RS-232)
GPS	Integrated GPS receiver

All models meet or exceed the standards for Portable Changeable Message Signs as listed in the U.S. Federal Highway Administration (FHWA) Manual on Uniform Traffic Control Devices (MUTCD). Specifications subject to periodic updates as required without notice.



SOLAR TECHNOLOGY, INC.
7620 Cetronia Rd. Allentown, PA 18106
Phone: 800-475-5442 or 610-391-8600
www.solartechnology.com

P/N 500-024-010 Rev. D 2013

OPTIONAL FEATURES AND UPGRADES

Display Panel

- Mega-Flux Display - 60° Viewing Angle
- High-Definition Display - 30 x 56 pixels 2.3" (58 mm) pixel pitch (available in standard or Mega-Flux)

Brakes

- Hydraulic Surge Brakes (5,000 lb. Capacity)
- Electric Brakes

Battery Upgrades

Type	Number	Capacity
Lead-Acid (flooded)	Six (6)	780 amp hour
	Eight (8)	1040 amp hour
	Ten (10)	1300 amp hour
	Twelve (12)	1560 amp hour
Gel Cell or AGM (maintenance free)	Four (4)	520 amp hour
	Six (6)	780 amp hour
	Eight (8)	1040 amp hour
	Ten (10)	1300 amp hour
	Twelve (12)	1560 amp hour

Solar Array Upgrades

- 240 watt • 320 watt • 400 watt • 480 watt

Battery Charger Upgrades

- 90 amp - 120 volt AC • 55 amp - 230 volt AC
- 40 amp - 230 volt AC

Remote Control Options

- Short range wireless - 802.11 WiFi
- Cellular wireless - GPRS (CDMA/GSM) with GPS
- Solar Comm - secure, low cost GSM

Radar Options

- Directional doppler K-Band. User-configurable KPH or MPH. Data Collection and Statistical Analysis Package included.

OTHER SOLAR TECH PRODUCTS

SILENT SENTINEL

Trailer and Vehicle Mount Arrow Boards

SILENT MESSENGER II

Mid-Size Trailer and Vehicle Mount Message Boards

SILENT MESSENGER III

Small-Size Trailer and Vehicle Mount Message Boards

SILENT MESSENGER IV

Small-Size Trailer and Vehicle Mount Message Boards

SILENT SENTINEL

Trailer and Vehicle Mount Arrow Boards

SILENT ADVISOR

Low and High-Speed Application Radar Speed Trailers

INCIDENT RESPONSE TRAILER

Work Zone Trailer with Cones and Barrels

SOLAR-POWERED PORTABLE TOWER TRAILER

Platform for Cameras, Sensors and/or Lighting

SOLARTRAK

Monitoring and GPS Tracking of Construction Equipment